

# Appendix 5 – 2023/24 Q2

## ECONOMY, REGENERATION, CULTURE AND LEISURE

**Cabinet Member: Councillor Julie Jones-Evans**

**Portfolio Responsibilities:**

- Economic Development
- Events
- Regeneration Projects
- Levelling Up, SLEP
- Tourism
- Leisure Centres
- Sports Development
- Events
- Libraries
- Theatres
- Museums
- Archaeology
- Records Office
- Allotment's
- Playing Fields/Sports Grounds
- Amenity Land Hire

### Performance Measures

**Average number of out of work benefit claimants (per month)**

**Aim:** Reduction in the number of out of work benefit claimants

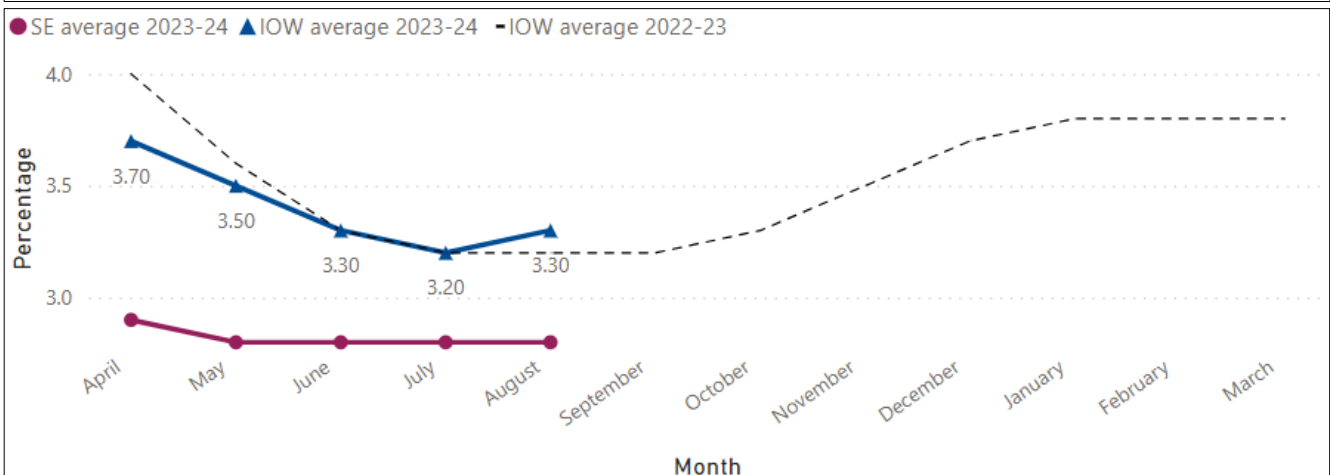
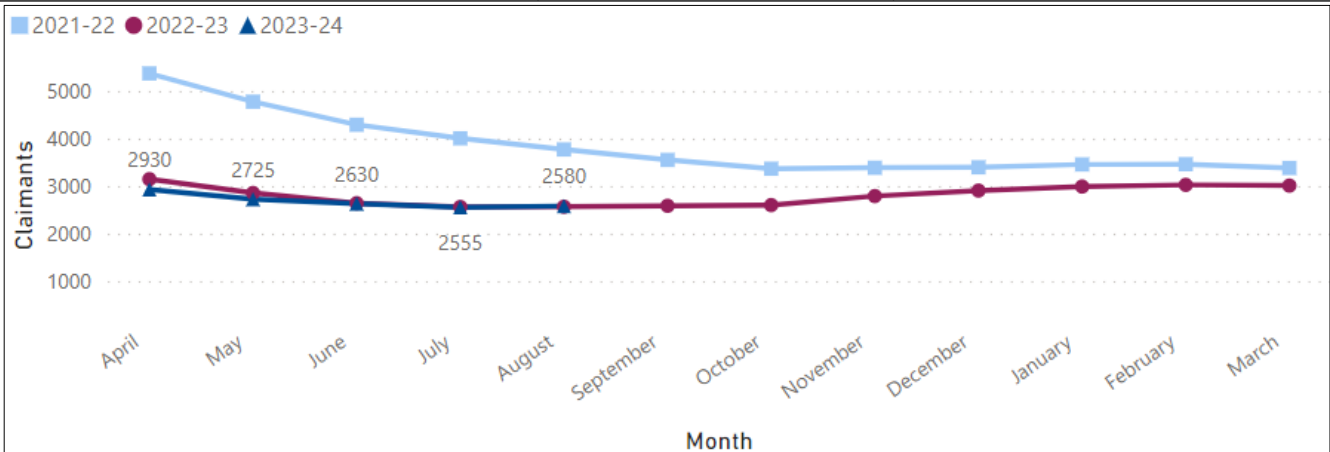
**UN Sustainable Development Goal:** 8

**Most Recent Status:** August 2023

**Monitoring Measure**

**Previous Status:** June 2023

**Monitoring Measure**



- Labour market data for September 2023 has not yet been released by the Office of National Statistics.

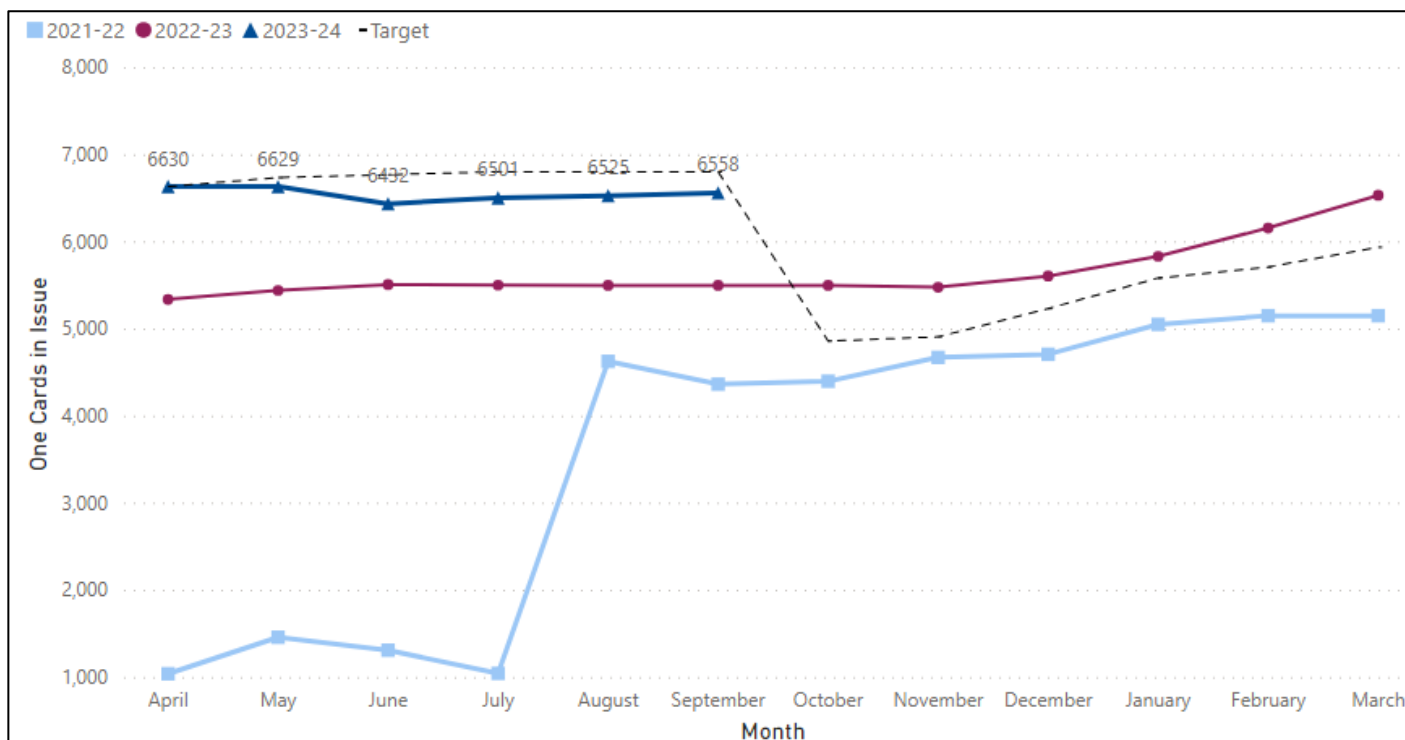
- The data shows that the number of out of work benefit claimants rose slightly over quarter 2 (up to August) and is at as similar rate as at the same time last year.
- We remain above the South East average of 2.8 percent, but below the England average of 3.7 percent.

**Total number of One Cards in issue**

**Aim:** Increase in the number of One Cards in issue

**UN Sustainable Development Goal:** 3

<b>Most Recent Status:</b> September 2023	<b>AMBER</b>
<b>Previous Status:</b> June 2023	<b>AMBER</b>



- Data from Leisure Facilities shows the number of One Cards (giving unlimited access to selected sports and leisure activities, subject to availability) in issue has remained above the volume seen over the previous two financial years.
- There is a 19 percent increase in the number of One Cards in issue compared to September 2022.

**Service Updates - Key Aspirations and Ongoing Business**

**The following activity supports UN Sustainable Development Goal 1:**

Thompson House demolition is complete, and discussions are progressing for the disposal to Registered Provider.

Options have been agreed for Berry Hill and these are in final draft with the legal team to finalise.

A bid for the three sites at New Street, Medina Avenue and Lowtherville has been successful and initial discussions are taking place for their disposal.

**The following activity supports UN Sustainable Development Goal 4:**

The Museum Estate and Development Fund (MEND) funding bid for Dinosaur Isle has been completed. Conversations continue with third parties and the future of funding will not be known from MEND until April 2024.

The Newport Cultural Centre Board has met, and a feasibility study has been commissioned by Turner Works (architects). This is due to be concluded in the next quarter.

**The following activity supports UN Sustainable Development Goal 8:**

The current developer of Pier Street (Sandown) was engaging with a builder and awaiting a final price. This has now been received and the developer has withdrawn his interest.

The works at Venture Quays (Columbine) have faced some delays but are nearing completion. Initially completion was expected by late August/early September 2023 however this is now pushed back further into October. Works to the Guard House at Venture Quays (Barracks) have been paused to secure funds to ensure completion of the main barracks building. This is following strong pressure to see the Guard House receive corrective works and a review of the finance commitments to date. A balanced approach to deliver some remedial works has been possible during this phase of works.

Area regeneration managers continue to work with local councils, groups, and stakeholders to deliver local priorities in line with place plans, local development of relationships and links with other strategic initiatives such as the cultural strategy.

A proposal for a large-scale community mural artwork project is being considered in East Cowes. This phased mural will aim to articulate the historical journey of an iconic building (The Columbine) and celebrate the reintroduction of the Sea Eagle to the Isle of Wight and the Solent.

The designs for The Department (Ryde), a new arts facility for the town to be operated by Shademakers UK CLC, have been developed to Royal Institute of British Architects (RIBA) stage four and tenders for the construction contract (valued at £1.9m) have been issued. A bid to National Lottery Heritage Fund for £250k has been submitted to support The Department project and a decision is expected at the end of October 2023.

Ryde Women's Art Trail has been commissioned whereby local artists will create a new town centre walking trail featuring new murals and artworks with a focus on the rich heritage of local women artists.

The Young Minds project (Newport) led by Independent Arts concluded with the unveiling of a series of public murals around the town centre devised by local young people with mental health challenges, celebrating the Isle of Wight biosphere and delivered by local artists.

Preparations are underway to bid to the Arts Council for funding to commission artists to lead a community project to animate the nine principal historic lanes and alleyways that characterise Newport town centre.

Work is underway with The Island Collection and Shademakers to establish a new base for creative manufacturing on the Island at the Building 41 site in Northwood.

Public engagement to underpin area-based social regeneration has continued through quarter two, with press releases relating to the Bay Place Plan consultation activities and Sandown Town Hall restoration. Press releases are also planned for the Skills4Work programme relaunch, the Building 42 'Hub and Spokes' model, and Bay Place Plan consultation results.

**The following activity supports UN Sustainable Development Goal 11:**

Work continues with local stakeholders on the place plans with area regeneration managers from the United Kingdom Shared Prosperity Fund (UKSPF) funding. These continue to deliver the Communities and Place theme of the investment plan. Key projects being supported in each area are The Department (Ryde), Sandown Town Hall and the Columbine Building and Barracks (East Cowes).

Numerous shop front improvements are taking place in Ryde and Newport. These are grant funded through the High Streets Heritage Action Zones programme (HSHAZ). Repurposing of the iconic Newport Town Centre building is almost complete, with conversion from empty retail space to education and retail.

Ryde Town Council is being supported on a range of local town centre improvement initiatives including Ryde Town Hall, Ryde Esplanade including Western Gardens, Ryde Skate Park, and an application to the Architectural Heritage Fund for support with establishing a Heritage Development Trust for the town. Representatives of the council sit on the Ryde Town Plan Committee and the Ryde Regeneration Working Group.

Work continues to support Shaping Newport, this has included progressing funding options for Newport Guildhall, continued support for Newport car-parking pilot scheme and supporting initiatives to improve the use of public realm.

Work to develop the Bay Area Place Plan is underway. Consultation identified several quick win projects, for which local groups are already being established. The draft place plan is due Autumn 2023. The revetment project continues, with phase one being delivered shortly.

## **Strategic Risks**

N/A